



AEROSURGE

Character Design: Rick Yeatman

Allegiance: Autobot

Function: Communication and Coordination

Quote: "Strategy and planning are the keys to victory!"

Biography: Methodical and relentless in his efforts to coordinate Autobot intelligence data. A firm believer in the importance of good intel, loathe to act when he doesn't have all the news he wants about a situation. Acts as a highly-mobile aerial communications platform, can intercept and decrypt most Decepticon radio transmissions. Carries long-range EMP shells. Can sometimes be slow to act if not adequately prepared with data.

Strength								8		
Intelligence									9	
Speed								8		
Endurance								8		
Rank							7			
Courage									9	
Firepower							7			
Skill									9	

INSTRUCTIONS

Supplies: To create these Paperformers, you will need white glue, and scissors. If you're confident in your skills, a ruler and exacto knife can be used to cut out the edges of the parts.

CHANGE! Nosecone: Cut out the canopy underside and intake pieces. Fold all three pieces into boxes and glue into shape. Glue the intakes onto either side of the canopy underside piece so that the point of the intake snugs the bottom corner of the canopy underside.

Cut out the canopy and nose pieces and fold them into sloped boxes. Glue into shape. Glue the nose to the front of the nosecone assembly so that the nose's point faces forward and is centered. Glue the canopy on top of the canopy underside, aligned with the nose, so the back of the canopy and canopy underside are aligned.

Lastly, cut out two of the four canopy hinge pieces and fold them into small open boxes. Glue into shape. Glue one box to the back inside of the canopy underside, so that the open part is up and down in relation to the nose cone assembly.

CHANGE! Head Assembly: Cut out the parts labeled 'head', 'chest cog', and the two remaining canopy hinge pieces. Fold the head into a box and glue into shape. Fold the chest cog into a box and glue into shape. Glue the head on top of the chest cog.

Fold the two hinge joint pieces as before. Glue to the sides of the chest cog piece, just below the head, so that the open parts face forward and back. Allow assembly to dry.

Cut out the two canopy joint pieces but do not yet glue into place. Instead, leave one each through the canopy hinge pieces found on the head assembly and cockpit assembly. The cockpit assembly should be able to swing forward to form the robot chest, or tuck above the head for jet mode. When lined up properly, secure the joint by gluing the two canopy joint pieces into shape, making sure that the assembly still moves freely but snugly.

CHANGE! Wings: Cut out the 'back', and 'lower back' pieces. Fold each into boxes and glue into shape. Glue the two pieces together so that the narrow back of each are lined up.

Cut out the two wings. Fold each in half to create a flat wing and glue into shape. When dry, glue each wing to the underside of the back assembly. The details of the wings should extend out fully from behind the back assembly.

Lastly for the wing assembly, cut out the two missiles and glue into triangular bars. Glue each missile to the ends of each wing.

CHANGE! Body: Cut out the waist and torso pieces, fold and glue into boxes. Glue the waist piece below the chest cog, and the torso piece to the bottom of the waist.

When all done, glue the body assembly to the underside of the wing assembly. The cockpit, when extended in 'jet mode', should line up with the wings correctly.

CHANGE! Arms: Cut out the 'r arm', 'l arm', 'shoulder' and the 'shoulder link' and the two 'arm joint' pieces. Fold the arms into boxes and glue them in shape.

Fold the shoulder link piece and glue it around the 'chest cog' piece so that an even amount of open space is on the left and right side of the cog. The open space should go up and down. The link piece should also be as wide as, and line up with the torso piece below it.

Take the two arm joint pieces and fold them as boxes. Before applying glue, leaf them into the shoulder link piece and then glue them into an open box. The joints and link piece should not be glued together!

When done, line up each arm either side of the assembly. The top of the arm should be even with the 'chest core' piece, and the bottom should be even with the 'torso' piece. Glue each arm to its respective joint piece. When done, each arm should slide in and out from beneath the support bar.

Cut out the two shoulder pieces, fold into boxes, and then glue to the top of each arm to complete the assembly.

CHANGE! Legs: Cut out the two leg pieces, the shins piece, and the leg brace. Create the legs by folding them up as boxes and gluing them into shape. Create the leg brace by folding it into a triangular crossbar and glue it into shape.

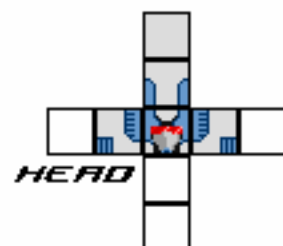
Glue the legs to opposite ends of one side of the leg brace. Let dry and then glue the free sides of each leg to the underside of the torso.

Fold the shins piece into a box and glue into place, but do not yet close off the tab on the top. Instead, once the shins piece is dry, insert the leg brace into the shins piece, with the color part of the shins piece facing forward. Insert the shin's loose tab between the legs and then secure the brace into place by gluing it down. The legs should be able to slide in and out of the shins freely.

FINISH! Tail: Cut out the two support strut pieces and fold into triangular beams. Glue each beam onto the backside of the shins, just inside the wings, vertically along the sides.

Cut out the tail pieces and fold in half, gluing them flat. Glue tail piece into position on the struts, making a 'v-shaped' tail. Use the position of the fins to help stabilize the robot mode.

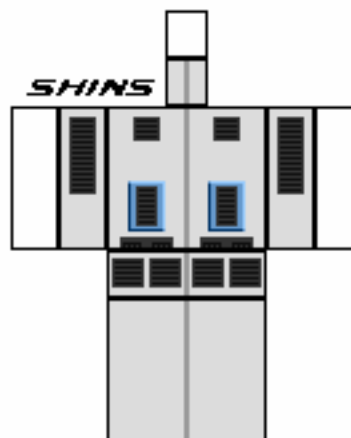
TRANSFORM! To form robot mode, fold nose down to form chest. Extend arms from sides. Extend down legs. To return to jet mode, reverse order of instructions.



HEAD

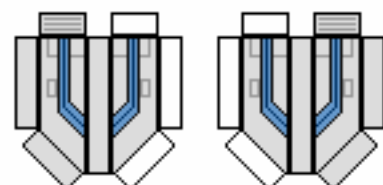


LEG



SHINS

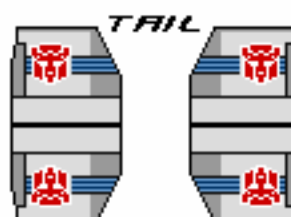
LEG
BRACE



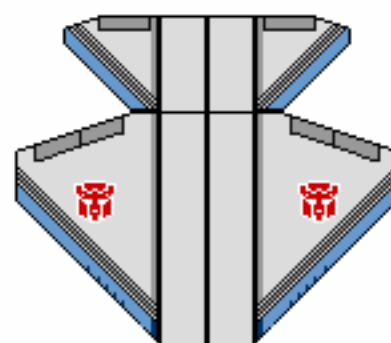
INTAKES



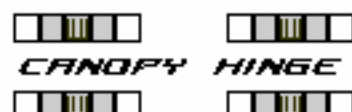
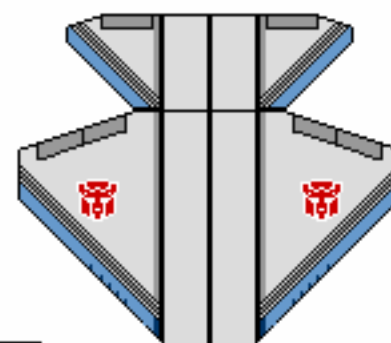
LEG



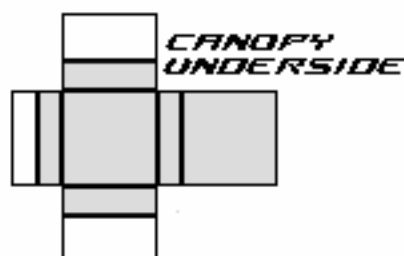
TAIL



WINGS



CANOPY HINGE



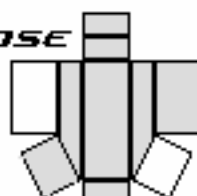
CANOPY
UNDERSIDE



STRUTS



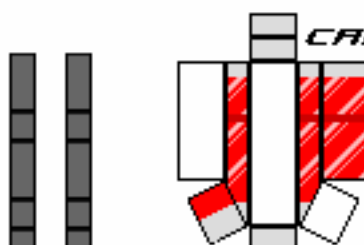
NOSE



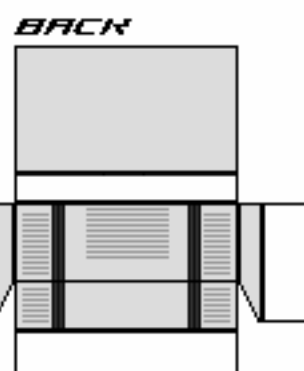
CHEST
COG



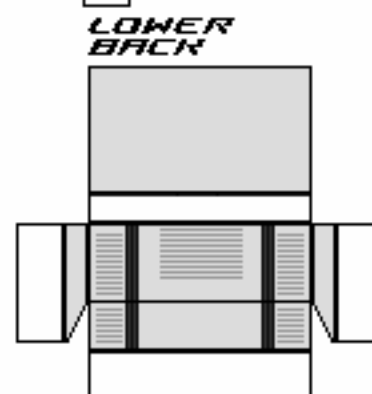
SHOULDER



CANOPY



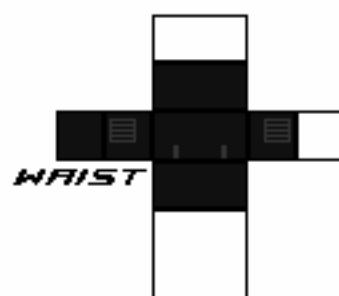
BACK



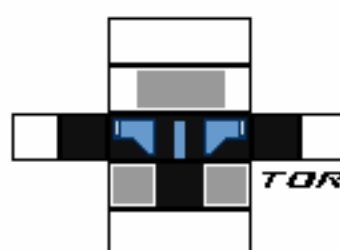
LOWER
BACK



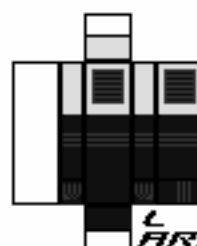
CANOPY
JOINT



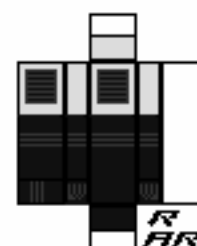
WAIST



TORSO

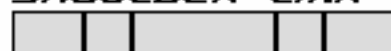


L
ARM



R
ARM

SHOULDER LINK



ARM JOINTS

